

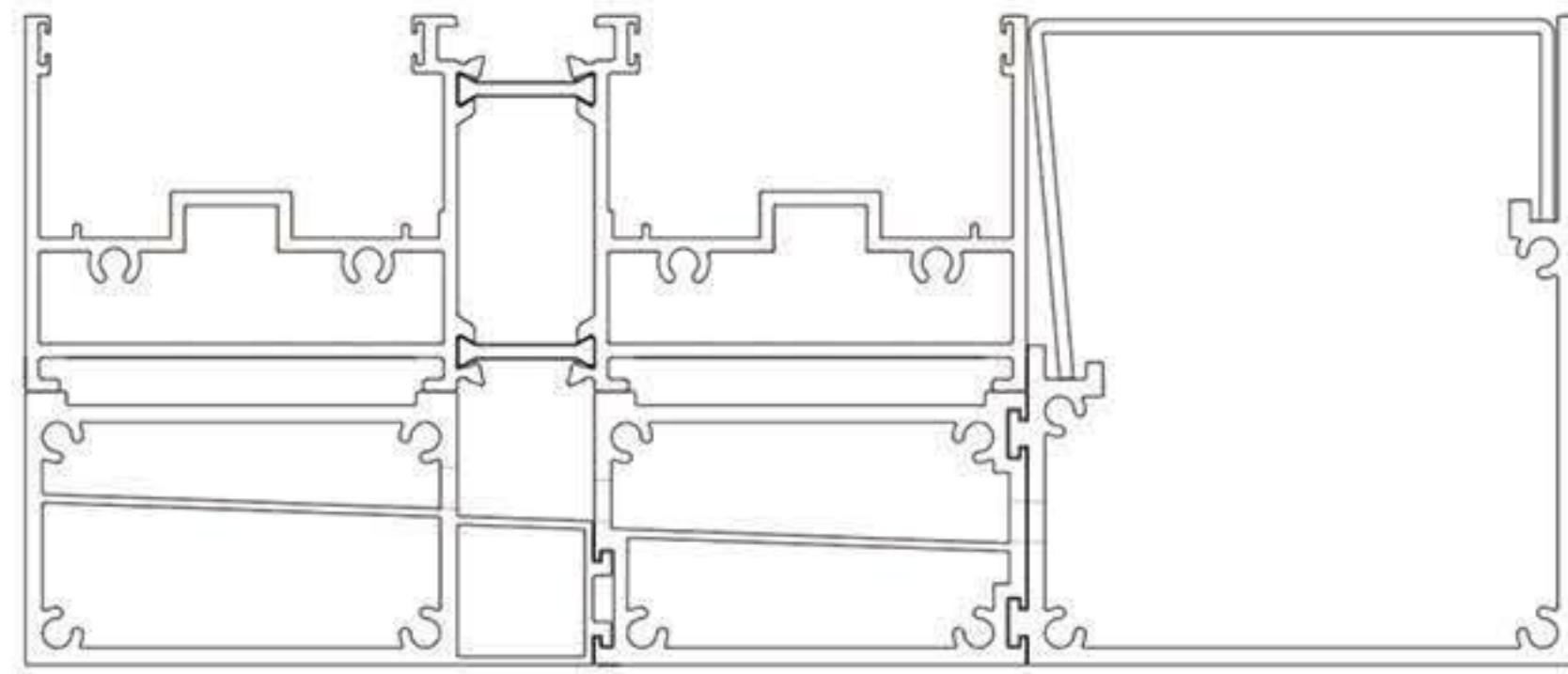


BROADWAY FINISHING

ALUMINUM GLASS AND DOORS CATALOG

Company Address: 145 W 2950 S
South Salt Lake City UT 84115
Office Phone: 385-232-9871
Email: Hwang@broadwayfinishing.com
Website: www.broadwayglass.us





SP146
SLIM SLIDING DOOR
SPECIAL LINE



with 2cm thickness simplification profile and with a large view. Abandon the traditional big and heavy sliding door frame, the minimalist push and pull is more close to the natural environment nearly. Higher glass to aluminum frame ratio,heat insulation performance system effectively improved. Hidden under the rail- with roller bearing, single panel load up to 500kgs. It can be made 3000mm by 3000mm per panel.

TECHNICAL DATA

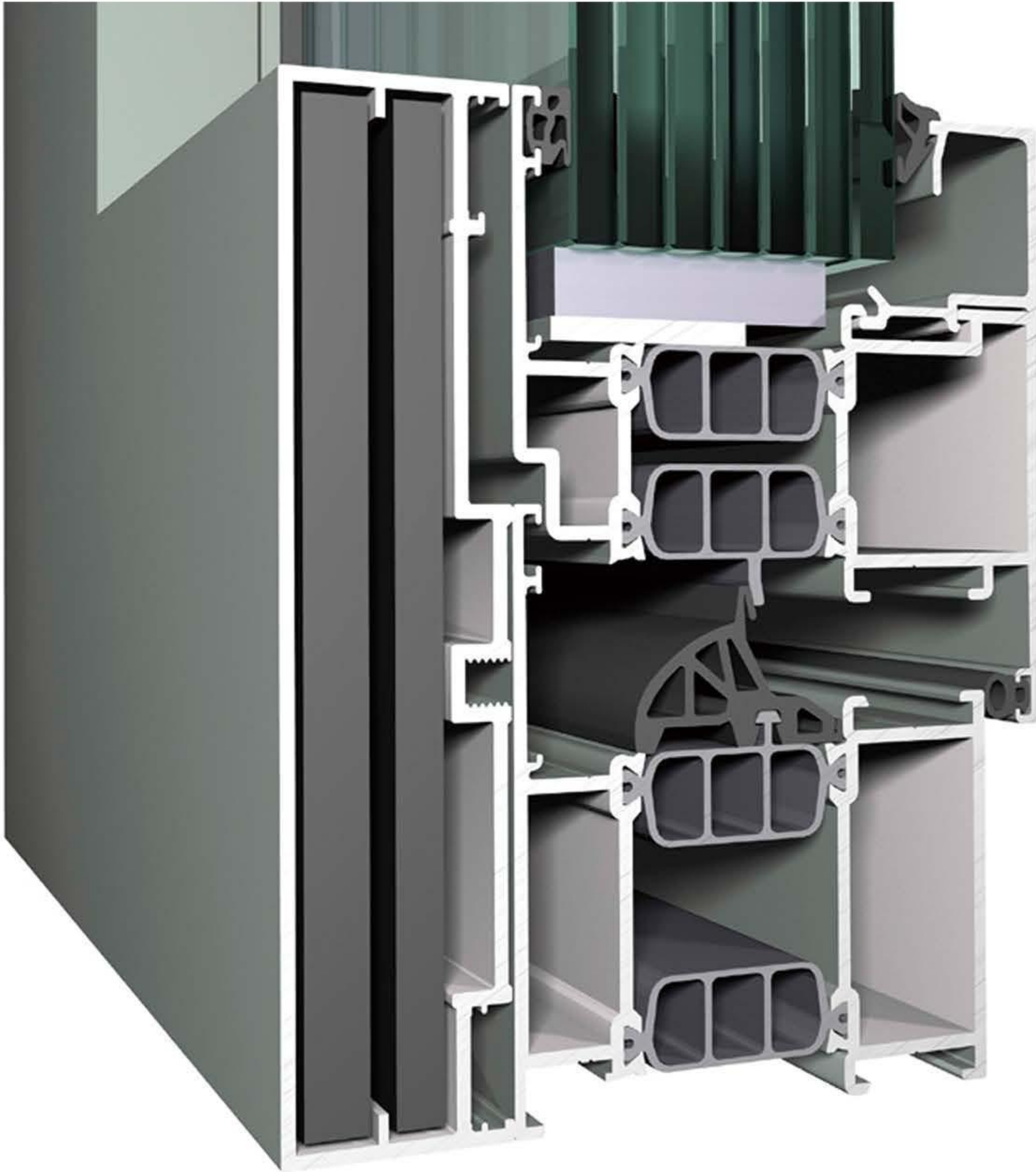
| | | |
|-------------------------|------------|-------------------------|
| Visible width (Outside) | Frame/Sash | 146mm |
| Profile Depth | Frame/Sash | Refer to detail drawing |
| Depth of glass groove | | |
| Glass Thickness | | |

PERFORMANCE

| | |
|----------------------|------------------------------------|
| Thermal Insulation | $U \leq 2.4 \text{ W/m}^2\text{K}$ |
| Acoustic Performance | $\leq 45\text{dB}$ |
| Air Tightness | 0.4 |
| Wind Load Resistance | $\geq 0.5\text{Kpa}$ |
| Water Penetration | 500 pa |
| Security Level | |



SP86
BULLET PROOF
SPECIAL LINE



bullet proof system meet UL752 standard and Florida USA product building approval. The special design with reinforce steel plate and bullet proof glass. Which is popular use for hurricane area and public like embassy, army area and bank.

TECHNICAL DATA

| | | |
|-------------------------|------------|-------------------------|
| Visible width (Outside) | Frame/Sash | Refer to detail drawing |
| Profile Depth | Frame/Sash | Refer to detail drawing |
| Depth of glass groove | | |
| Glass Thickness | | |

PERFORMANCE

| | |
|----------------------|-------------|
| Thermal Insulation | U≤1.1 W/m2K |
| Acoustic Performance | ≤45dB |
| Air Tightness | 0.4 |
| Wind Load Resistance | ≥0.5Kpa |
| Water Penetration | 900 pa |
| Security Level | |

SP100
HINGE DOOR
COMMERCIAL



hinge door is classic model. It can be high threshold or low threshold or without threshold. Stainless steel handle for option. Normally use for commercial area such as shop entrance door. It aslo can be escape door.

TECHNICAL DATA

| | | |
|-------------------------|------------|-------------------------|
| Visible width (Outside) | Frame/Sash | Refer to detail drawing |
| Profile Depth | Frame/Sash | Refer to detail drawing |
| Depth of glass groove | | |
| Glass Thickness | | |

PERFORMANCE

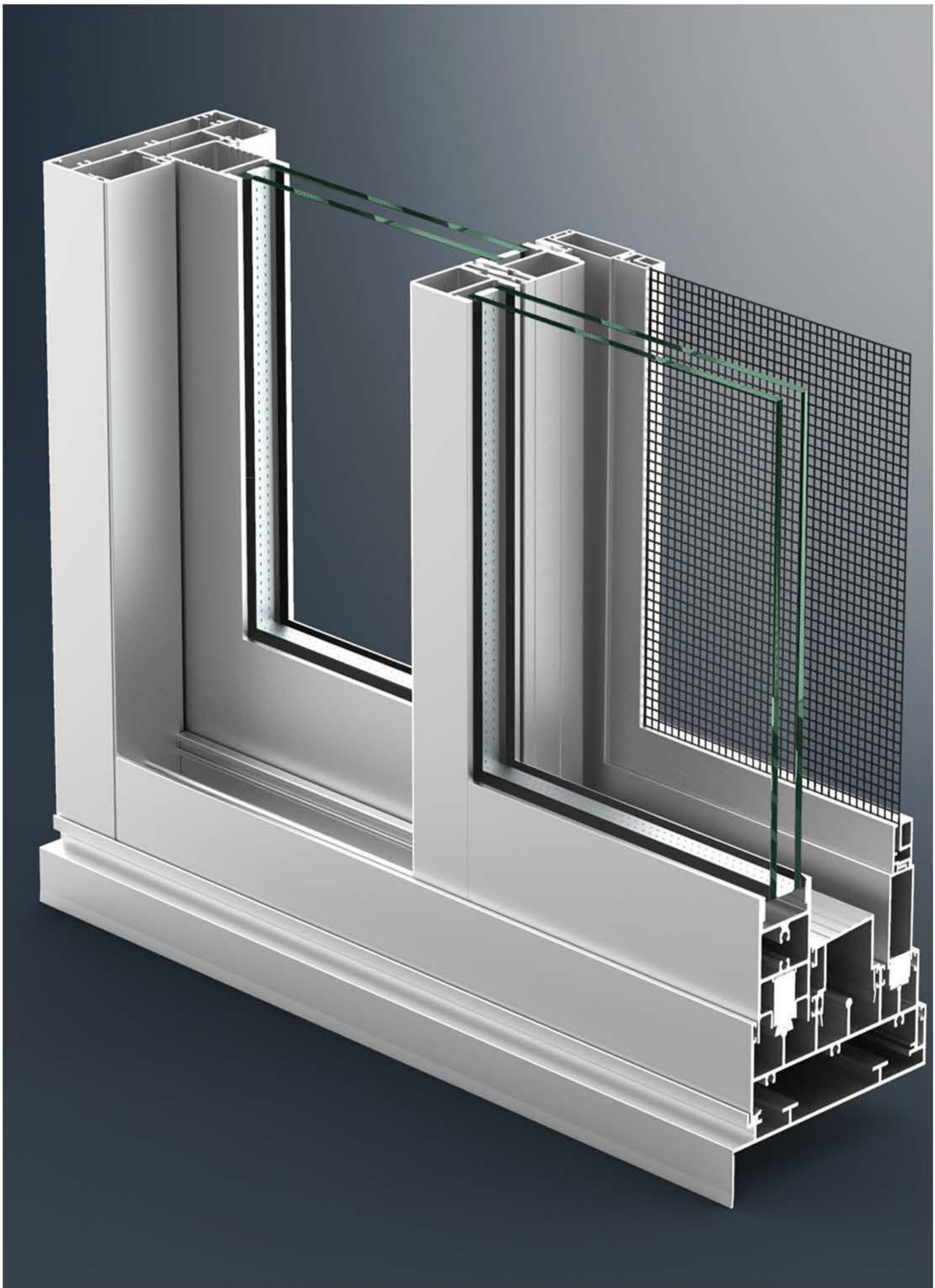
| | |
|----------------------|-------------|
| Thermal Insulation | U≤3.4 W/m2K |
| Acoustic Performance | ≤45dB |
| Air Tightness | 0.4 |
| Wind Load Resistance | ≥0.5Kpa |
| Water Penetration | 600 pa |
| Security Level | |



SP100

SLIDING DOOR

COMMERCIAL



SP100 Sliding door system, it can be equipped with triple glass to get better sound insulation and energy saving. This system is equipped with heavy duty and it can be load max. 300kg weight. It could create smoother and more reliable operation experience for users during the repeated opening and closing. Available with stainless steel mesh and could meet 600pa water penetration. Popular used in Australia market.

TECHNICAL DATA

| | | |
|-------------------------|------------|---------|
| Visible width (Outside) | Frame/Sash | 50mm |
| Profile Depth | Frame/Sash | 130mm |
| Depth of glass groove | | 16mm |
| Glass Thickness | | 12~30mm |

PERFORMANCE

| | |
|----------------------|------------------------------------|
| Thermal Insulation | $U \leq 3.8 \text{ W/m}^2\text{K}$ |
| Acoustic Performance | $\leq 42\text{dB}$ |
| Air Tightness | 0.4 |
| Wind Load Resistance | $\geq 0.5\text{Kpa}$ |
| Water Penetration | 600 pa |
| Security Level | |

SP150
STACKER DOOR
COMMERCIAL

SP150 stacker door system, it could be with triple glass to realize better sound insulation and energy saving. This system is here with heavy duty. It could create smoother and more reliable operation experience for users during the repeated opening and closing. Available with stainless steel mesh and could meet 600 pa water penetration. Popular used in Australia Market.

SP80T
HINGE DOOR
STAR SERIES

is excellent heat insulating function, which belong to our star system with very high quality and with kick plate. It could realized inwards opening, outwards opening, low threshold and high threshold. Also there are different kinds of hardware for choose and it could meet C and U groove with multi point locking system.

TECHNICAL DATA

| | | |
|-------------------------|------------|---------|
| Visible width (Outside) | Frame/Sash | 50mm |
| Profile Depth | Frame/Sash | 150mm |
| Depth of glass groove | | 16mm |
| Glass Thickness | | 12~31mm |

PERFORMANCE

| | |
|----------------------|------------------------------------|
| Thermal Insulation | $U \leq 3.4 \text{ W/m}^2\text{K}$ |
| Acoustic Performance | $\leq 45\text{dB}$ |
| Air Tightness | 0.4 |
| Wind Load Resistance | $\geq 0.5\text{Kpa}$ |
| Water Penetration | 600 pa |
| Security Level | |

TECHNICAL DATA

| | | |
|-------------------------|------------|------|
| Visible width (Outside) | Frame/Sash | 50mm |
| Profile Depth | Frame/Sash | 80mm |
| Depth of glass groove | | 27mm |
| Glass Thickness | | 48mm |

PERFORMANCE

| | |
|----------------------|------------------------------------|
| Thermal Insulation | $U \leq 1.4 \text{ W/m}^2\text{K}$ |
| Acoustic Performance | $\leq 45\text{dB}$ |
| Air Tightness | 0.4 |
| Wind Load Resistance | $\geq 0.5\text{Kpa}$ |
| Water Penetration | 600 pa |
| Security Level | |



SP115

BI-FOLDING DOOR COMMERCIAL



door could meet design of 220,330,431,550,541,633, 651,743 and so on. Also could with retractor flyscreen. It can be make 3000mm high with heavy duty hinge and with striped sash to improve aesthetics sash. Also it is the flagship product in Superhouse product system.

TECHNICAL DATA

| | | |
|-------------------------|------------|---------|
| Visible width (Outside) | Frame/Sash | 30mm |
| Profile Depth | Frame/Sash | 115mm |
| Depth of glass groove | | 22mm |
| Glass Thickness | | 21~42mm |

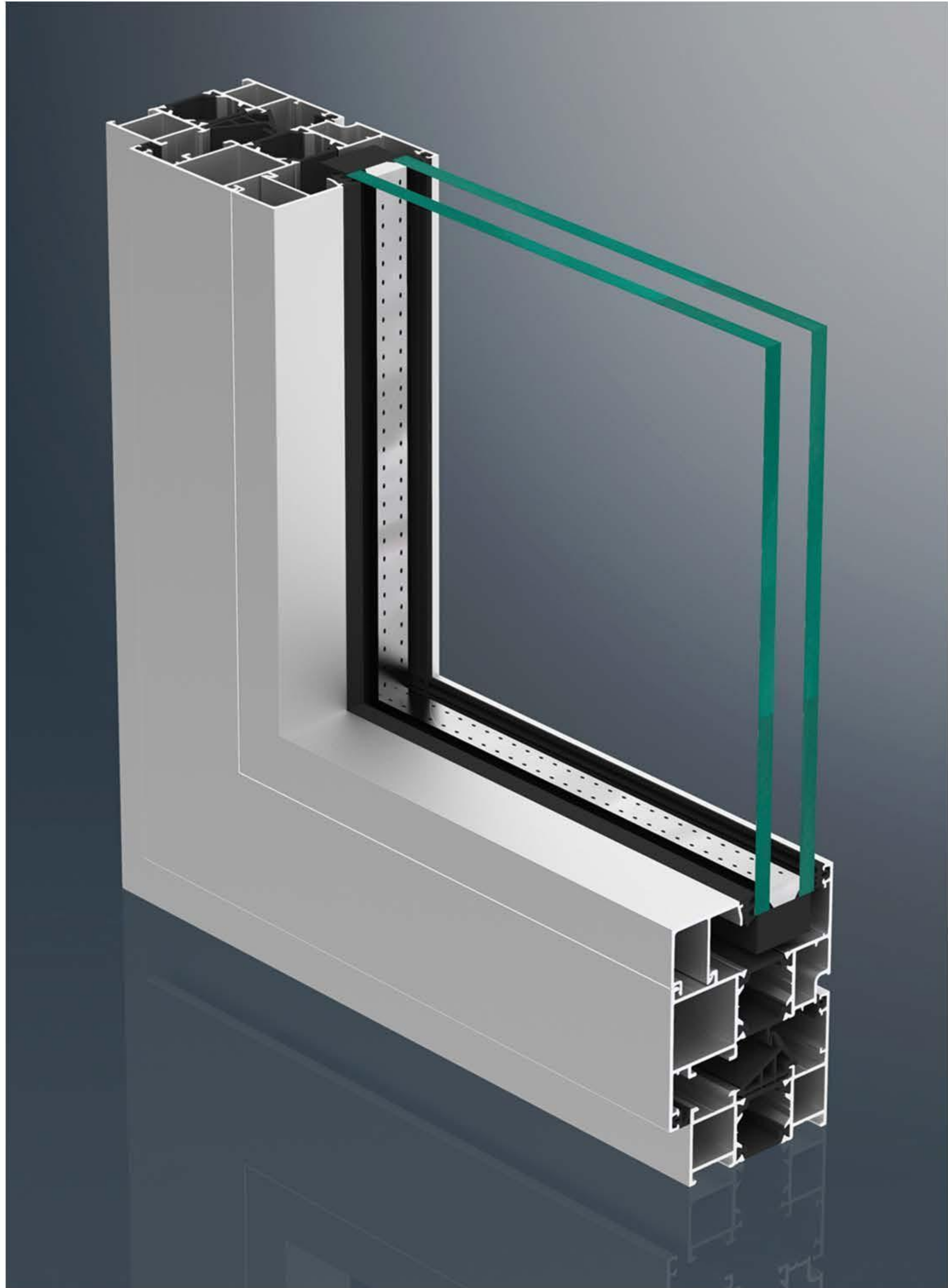
PERFORMANCE

| | |
|----------------------|------------------------------------|
| Thermal Insulation | $U \leq 3.4 \text{ W/m}^2\text{K}$ |
| Acoustic Performance | $\leq 45\text{dB}$ |
| Air Tightness | 0.4 |
| Wind Load Resistance | $\geq 0.5\text{Kpa}$ |
| Water Penetration | 600 pa |
| Security Level | |

SP65T

Awning
Casement
SUPER SERIES

SP65T system is excellent heat insulating function, through the adoption of 24mm thermal insulation aluminum profile, it could keep the U-value less than 1.6 W/m.K. It could not only satisfy users' strick requirement on physical function, but also realize various segmentations of windows and doors. It is popular on North American Area. Flagship product in Superhouse system



TECHNICAL DATA

| | | |
|-------------------------|------------|------|
| Visible width (Outside) | Frame/Sash | 30mm |
| Profile Depth | Frame/Sash | 65mm |
| Depth of glass groove | | 27mm |
| Glass Thickness | | 48mm |

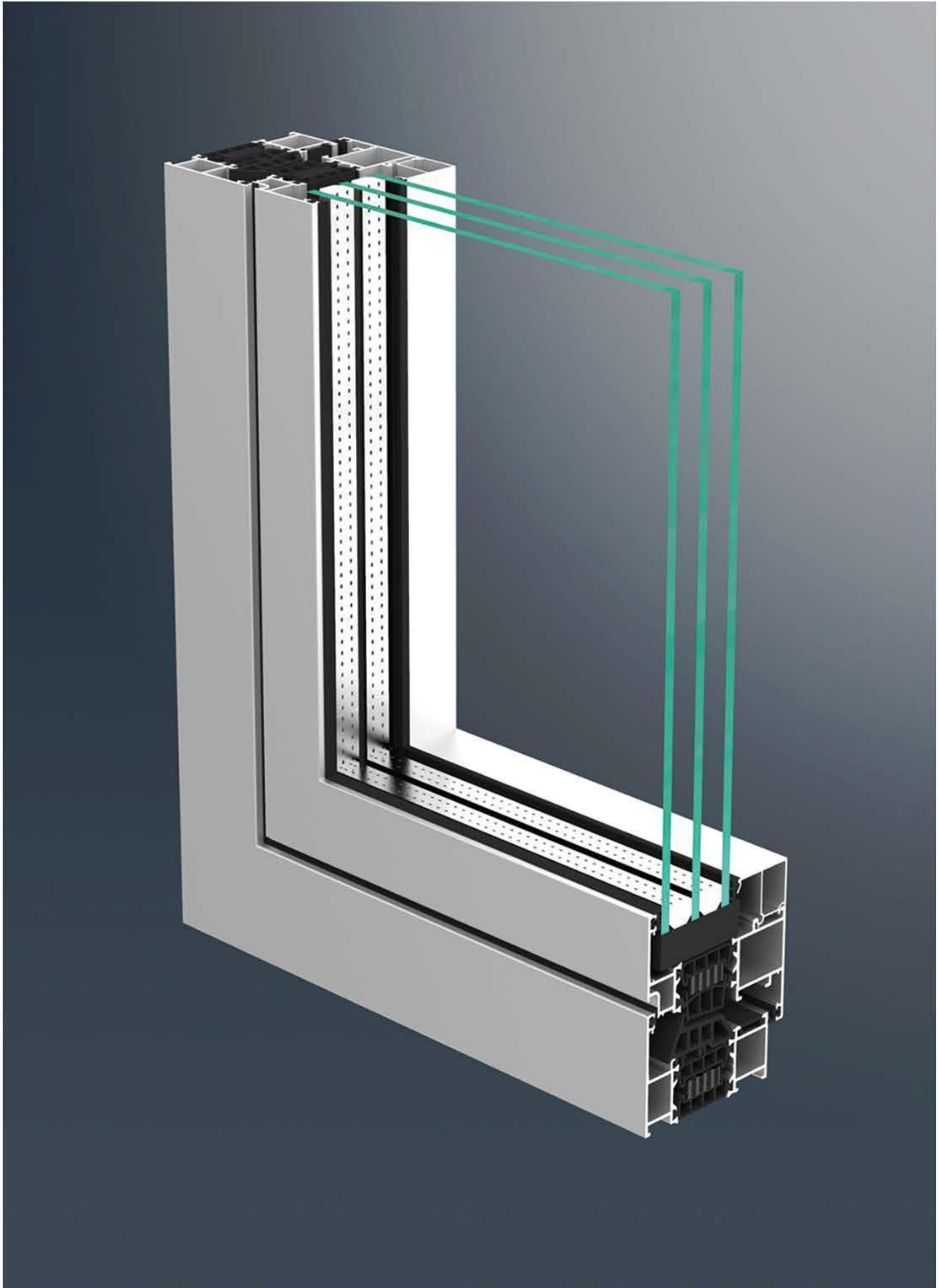
PERFORMANCE

| | |
|----------------------|------------------------------------|
| Thermal Insulation | $U \leq 1.6 \text{ W/m}^2\text{K}$ |
| Acoustic Performance | $\leq 45\text{dB}$ |
| Air Tightness | 0.4 |
| Wind Load Resistance | $\geq 0.5\text{Kpa}$ |
| Water Penetration | 900 pa |
| Security Level | |

SP80T

Awning
Casement
STAR SERIES

P80 system is excellent heat insulating function, through the adoption of 39mm thermal insulation aluminum profile, it could keep the U-value less than 1.1w/m.k. It could not only satisfy users strict requirement on physical function, but also is the flagship product in superhouse system. Comply with AAMA CSA WDMA101/I.S.2/A440-11.



TECHNICAL DATA

| | | |
|-------------------------|------------|------|
| Visible width (Outside) | Frame/Sash | 30mm |
| Profile Depth | Frame/Sash | 79mm |
| Depth of glass groove | | 27mm |
| Glass Thickness | | 61mm |

PERFORMANCE

| | |
|----------------------|------------------------------------|
| Thermal Insulation | $U \leq 1.4 \text{ W/m}^2\text{K}$ |
| Acoustic Performance | $\leq 45\text{dB}$ |
| Air Tightness | 0.4 |
| Wind Load Resistance | $\geq 0.5\text{Kpa}$ |
| Water Penetration | 900 pa |
| Security Level | |



SP100

AWNING WINDOW COMMERCIAL

SP100 Chain winder window could be equipped with double or triple glass to realize better sound insulation and energy-saving. This system is here with Australia local 125mm limited opening restrictor. Available with stainless steel mesh or flyscreen. And with Australia standard and with 900pa water penetration and popular used in Australia market.

TECHNICAL DATA

| | | |
|-------------------------|------------|---------|
| Visible width (Outside) | Frame/Sash | 50mm |
| Profile Depth | Frame/Sash | 100mm |
| Depth of glass groove | | 20mm |
| Glass Thickness | | 12~31mm |

PERFORMANCE

| | |
|----------------------|------------------------------------|
| Thermal Insulation | $U \leq 3.4 \text{ W/m}^2\text{K}$ |
| Acoustic Performance | $\leq 45\text{dB}$ |
| Air Tightness | 0.4 |
| Wind Load Resistance | $\geq 0.5\text{Kpa}$ |
| Water Penetration | 900 pa |
| Security Level | |



SP130
GLASS LOUVER
COMMERCIAL

louver is popular for Australia market and which could be with the flyscreen and also Stainless steel mesh. Available for 6mm glass and 6.38mm laminated glass. It is the flagship product in Superhosue system. And which pass 150 pa water penetration for the AS2047 Standard.

SP75T
BI-FOLDING DOOR
STAR SERIES

folding sliding doors if you prefer, are a modern and innovative design statement that can transform an ordinary room and make it a feature of the house. It can be low threshold and high threshold. Available in a number of configurations using between 2 and 8 door leaves.

TECHNICAL DATA

| | | |
|-------------------------|------------|-------|
| Visible width (Outside) | Frame/Sash | 25mm |
| Profile Depth | Frame/Sash | 130mm |
| Depth of glass groove | | 16mm |
| Glass Thickness | | 6mm |

PERFORMANCE

| | |
|----------------------|------------------------------------|
| Thermal Insulation | $U \leq 4.4 \text{ W/m}^2\text{K}$ |
| Acoustic Performance | $\leq 35\text{dB}$ |
| Air Tightness | 0.4 |
| Wind Load Resistance | $\geq 0.5\text{Kpa}$ |
| Water Penetration | 150 pa |
| Security Level | |

TECHNICAL DATA

| | | |
|-------------------------|------------|------|
| Visible width (Outside) | Frame/Sash | 36mm |
| Profile Depth | Frame/Sash | 75mm |
| Depth of glass groove | | 29mm |
| Glass Thickness | | 51mm |

PERFORMANCE

| | |
|----------------------|------------------------------------|
| Thermal Insulation | $U \leq 2.4 \text{ W/m}^2\text{K}$ |
| Acoustic Performance | $\leq 45\text{dB}$ |
| Air Tightness | 0.4 |
| Wind Load Resistance | $\geq 0.5\text{Kpa}$ |
| Water Penetration | 600 pa |
| Security Level | |



SP239T

Lift&Sliding door
STAR SERIES

SP239T system is a sliding and lift&sliding door woollen thermal insulation. The perfect design max. glass area and enhances comfort, which system has a small threshold scheme to facilitate access to building. The lift and sliding door can accommodate large size glass door and bear up to 400kg which meets the requirement of anti theft performance.



TECHNICAL DATA

| | | |
|-------------------------|------------|-------|
| Visible width (Outside) | Frame/Sash | 64mm |
| Profile Depth | Frame/Sash | 239mm |
| Depth of glass groove | | 26mm |
| Glass Thickness | | 53mm |

PERFORMANCE

| | |
|----------------------|------------------------------------|
| Thermal Insulation | $U \leq 1.6 \text{ W/m}^2\text{K}$ |
| Acoustic Performance | $\leq 45\text{dB}$ |
| Air Tightness | 0.4 |
| Wind Load Resistance | $\geq 0.5\text{Kpa}$ |
| Water Penetration | 600 pa |
| Security Level | |

SP153T
Lift&Sliding door
STAR SERIES

SP153T system is a sliding and lift&sliding door with excellent thermal insulation. The perfect design maximizes glass area and enhances comfort, which system has a small threshold scheme to facilitate access to building. The lift and sliding door can accommodate large size glass door and bear up to 400kg which meets the requirement of anti theft performance.

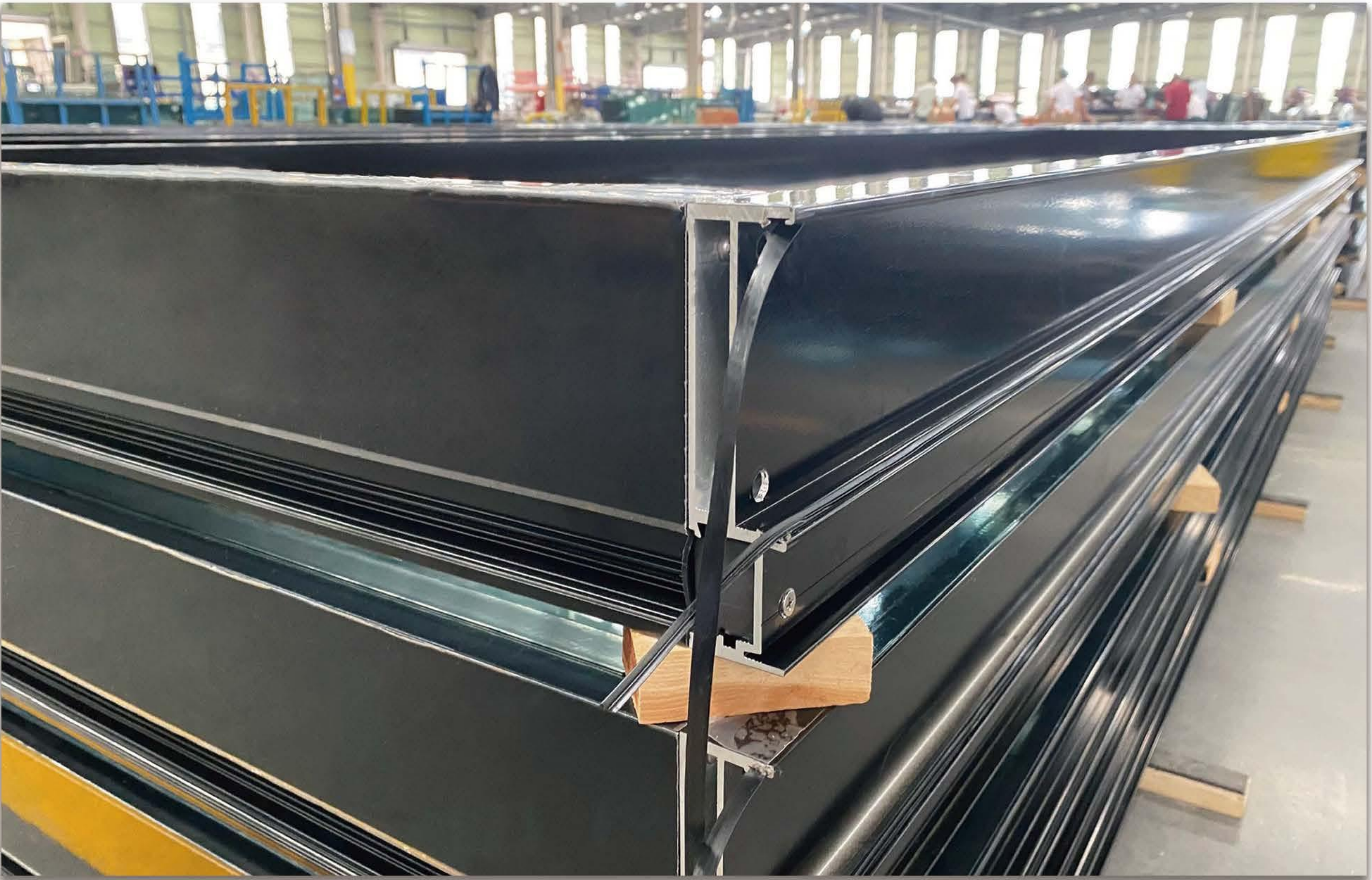
TECHNICAL DATA

| | | |
|-------------------------|------------|-------|
| Visible width (Outside) | Frame/Sash | 64mm |
| Profile Depth | Frame/Sash | 153mm |
| Depth of glass groove | | 26mm |
| Glass Thickness | | 53mm |

PERFORMANCE

| | |
|----------------------|------------------------------------|
| Thermal Insulation | $U \leq 1.6 \text{ W/m}^2\text{K}$ |
| Acoustic Performance | $\leq 45\text{dB}$ |
| Air Tightness | 0.4 |
| Wind Load Resistance | $\geq 0.5\text{Kpa}$ |
| Water Penetration | 600 pa |
| Security Level | |

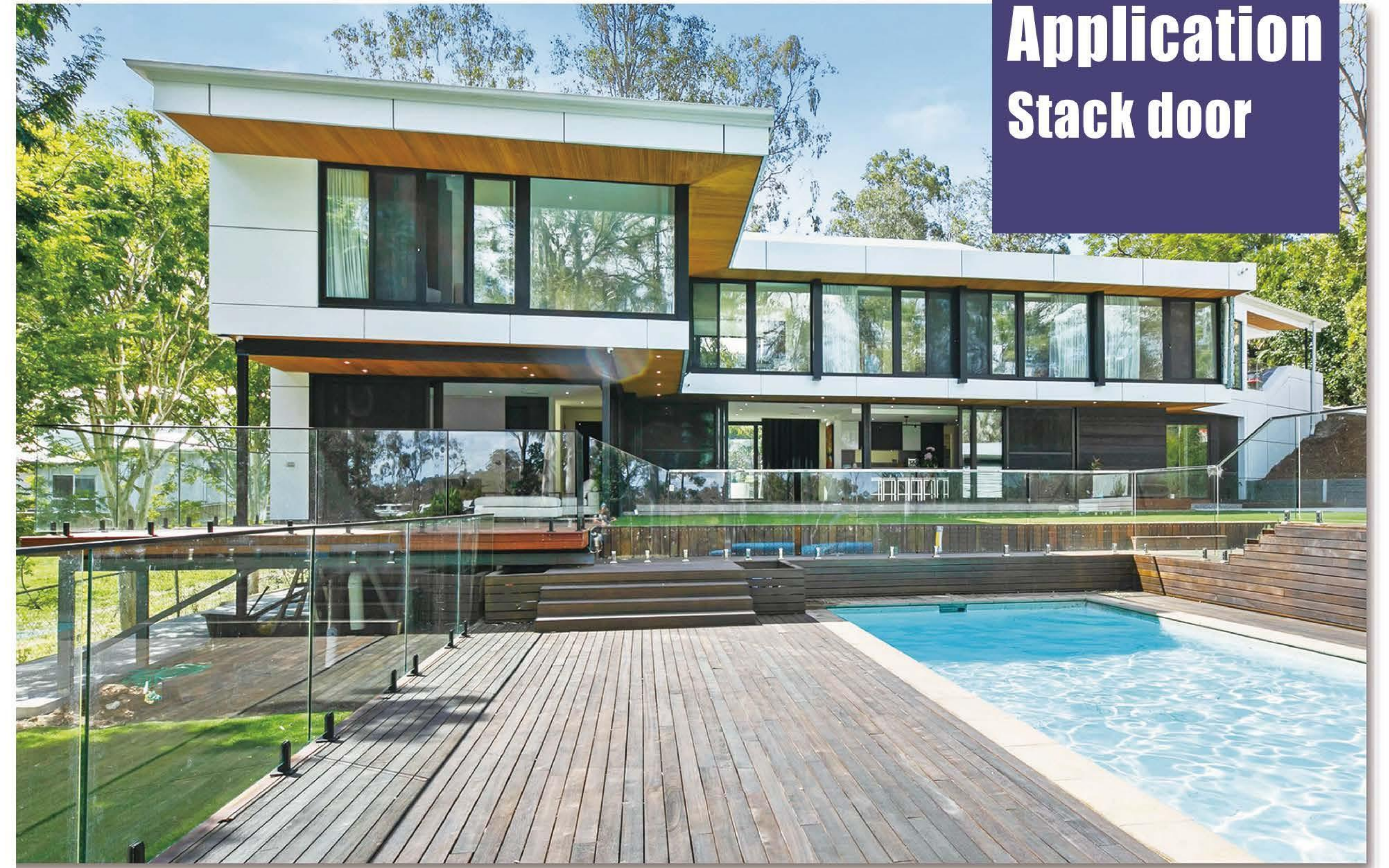
Projects
petrol station



**Application
Energy-Saving
System**



**Application
Stack door**



Application
Cambria hotel



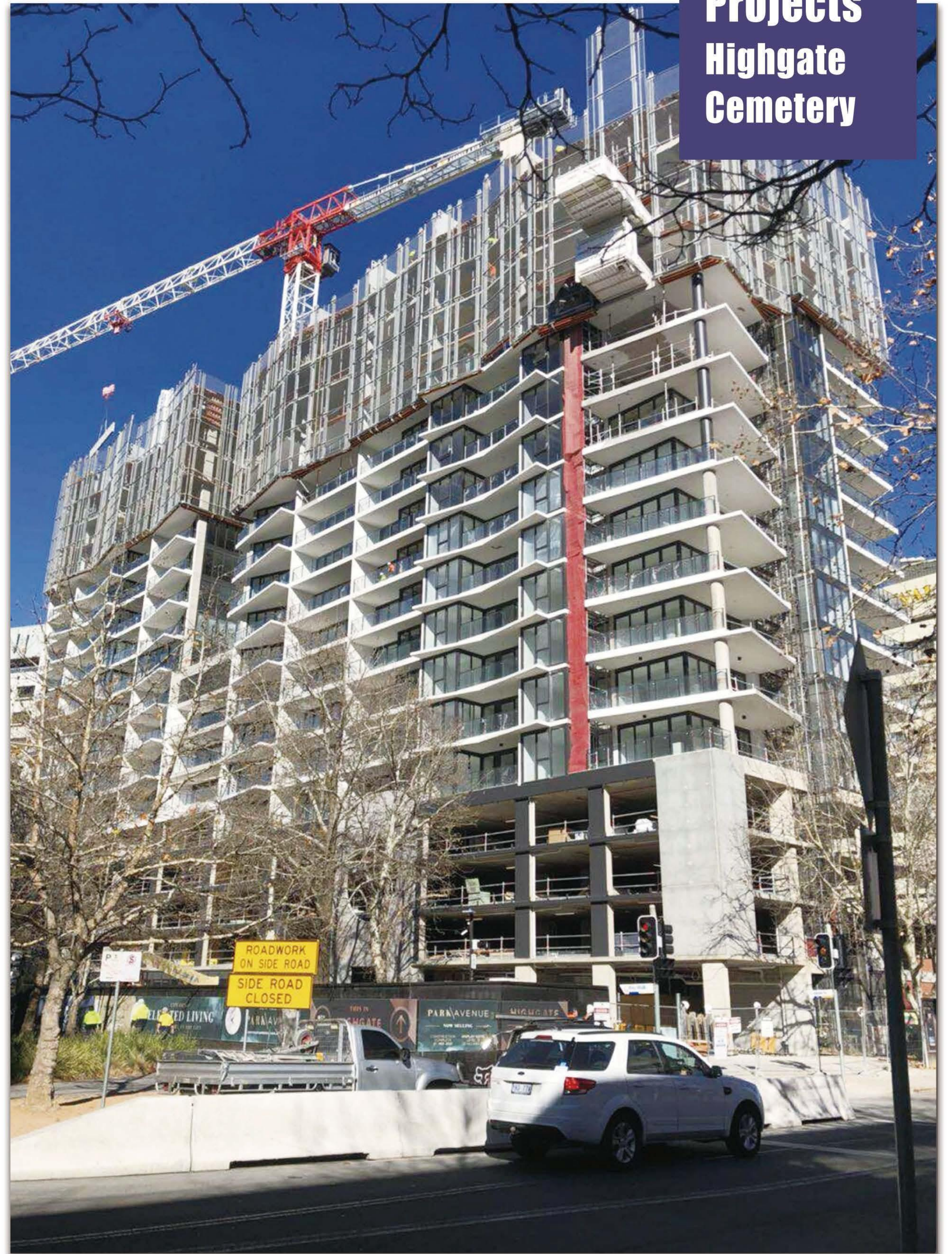
Projects
Miami hotel



Projects UK apartment

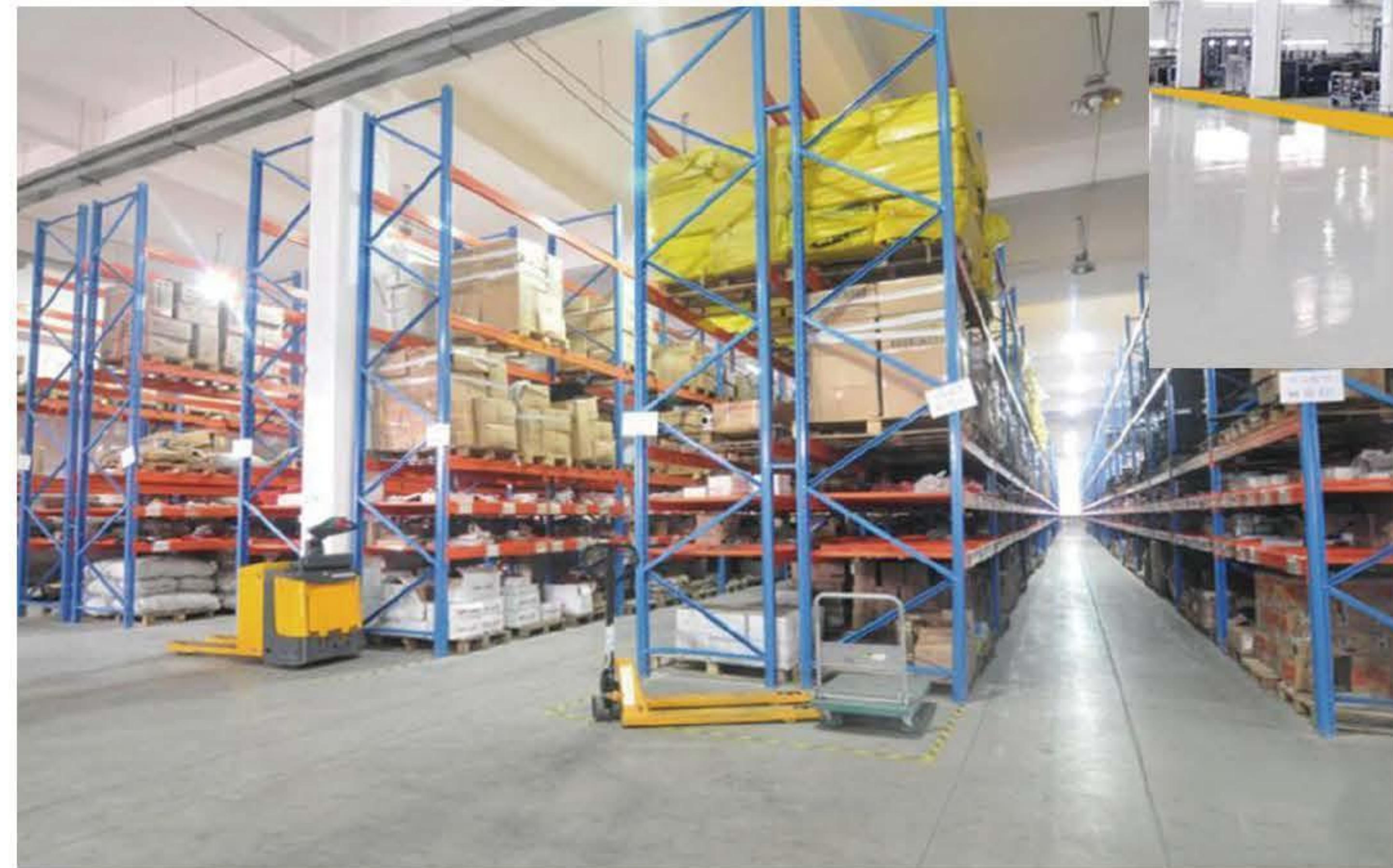


Projects Highgate Cemetery



FACTORY VIEW

Tidy warehouse , clean and sufficient, which provides a strong backup support for rapid production.



20000 m² Factory Area



AUTO-MACHINES

FACTORY VIEW

Packing based on iron and tested by SGS , Suitable for long sea transportation.



SGS Approved Packing



Professional technical personnel combined with intelligent production lines can create products that are both efficient and of high quality.



